

WARING
COMMERCIAL

MX1050XTEE

64 oz. BPA-Free copolyester container - Europe

MX1050XTEES

64 oz. stainless steel container - Europe

MX1050XTPEE

32-48 oz. BPA-Free copolyester container - Europe

MX1050XTPSEE

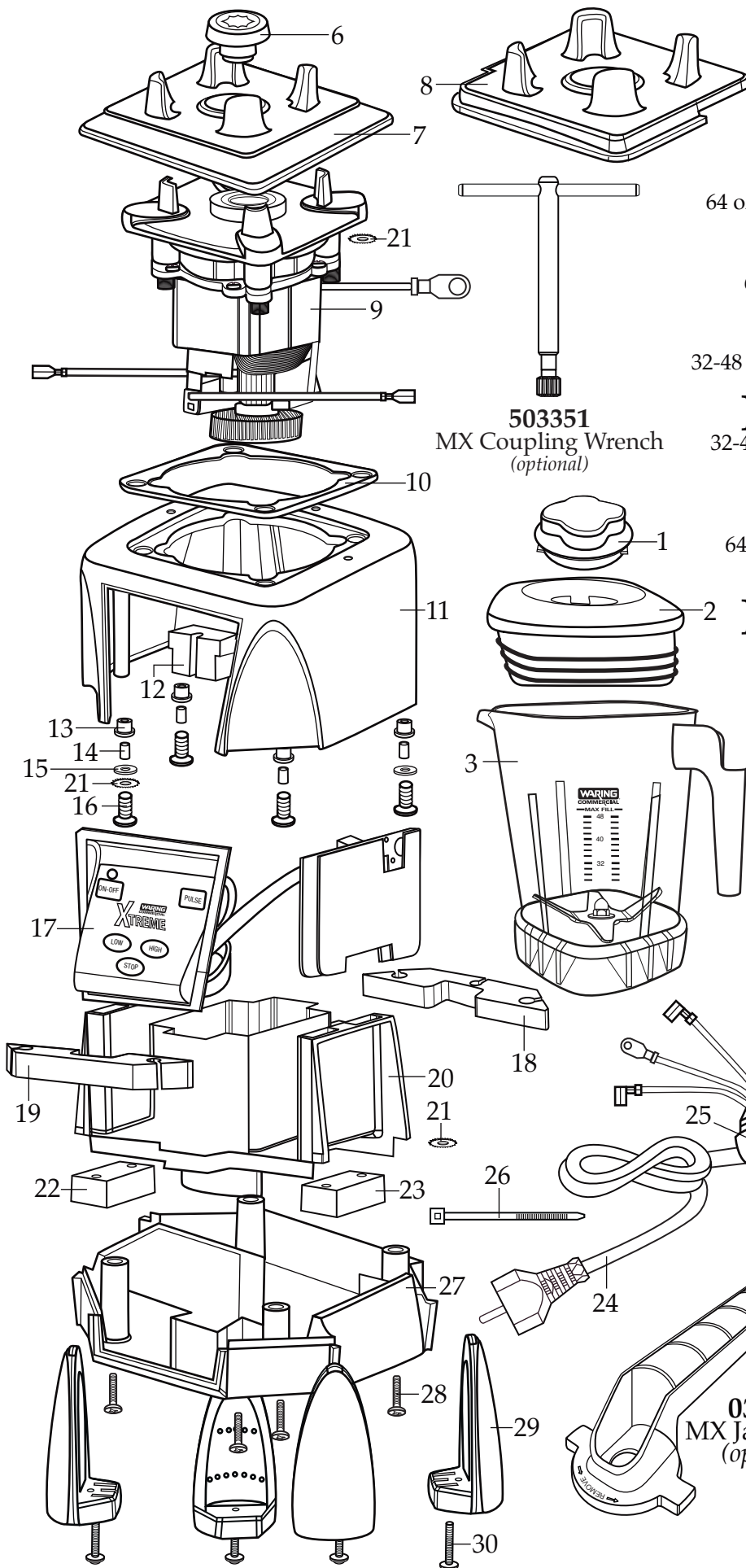
32-48 oz. BPA-Free copolyester container with
Sound Enclosure - Europe

MX1050XTSEE

64 oz. BPA-Free copolyester container with
Sound Enclosure - Europe

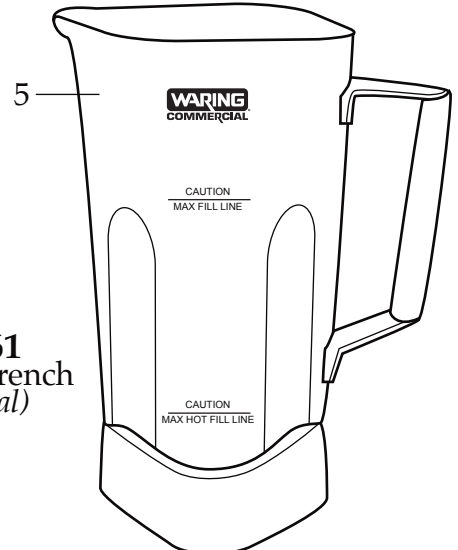
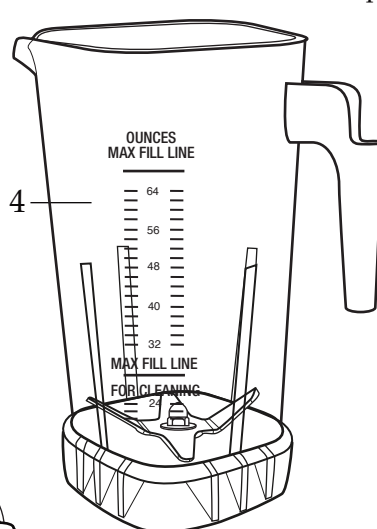
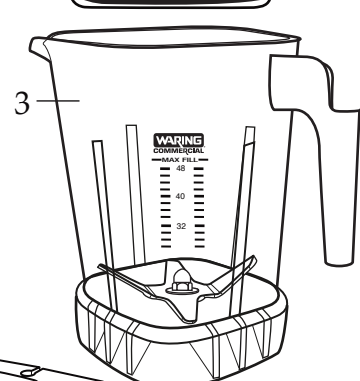
MX1050XTSEES

64 oz. stainless steel container with
Sound Enclosure - Europe



503351
MX Coupling Wrench
(optional)

032761
MX Jar Wrench
(optional)



Catalog

MX1050XTEE
 MX1050XTEES
 MX1050XTPEE
 MX1050XTPSEE
 MX1050XTSEE
 MX1050XTSEES

Model

MX1050XT11EE - MX1050XT11CE
 MX1050XT31CE
 MX1050XT12CE
 MX1050XT22CE
 MX1050XT12SEE - MX1050XT12SCE
 MX1050XT32CE



Illustration #	Part #	Description
1	028769-E	Jar Lid Cover
2	028768	Jar Lid
3	503439	Jar with Blending Assembly (48 oz. stackable Raptor)
	503348	Jar with Blending Assembly (48 oz. Eastman)
4	503398	Jar with Blending Assembly (64 oz. stackable Raptor)
5	503346	Jar with Blending Assembly (64 oz. stainless steel)
6	028538	Drive Clutch
7	026442	Jar Pad
8	026443	Sound Enclosure Jar Pad
9	028823	Motor
10	026437	Dampening Plate Gasket
11	503382-E	MX Housings, Ferrite Core & Cord <i>(CE model)</i>
	028032-09	Black Top Housing
	503140	Top Housing with Magnet Assembly <i>(no longer available)</i>
12	028541	Motor Foam (2 Required)
13	026439	Dampening Plate Bushing (4 required)
14	026453	Dampening Plate Sleeve (4 required)
15	026459	Washer (2 required)
16	028929	Screw (4 required)
	026459	Washer (4 required <i>older units</i>)
	026455	Screw (4 required <i>older units</i>)
17	029814	Control Panel
18	028248	Housing Foam Rear Baffle
19	028249	Housing Foam Front Baffle
20	503382-E	MX Housings, Ferrite Core & Cord <i>(CE model)</i>
	028240	Motor Housing
21	002943	Washer (3 required)
22	028247	Bottom Housing Foam Baffle
23	028542	Foam Baffle
24	503382-E	MX Housings, Ferrite Core & Cord <i>(CE model)</i>
	503141	Cord Set
25	007556	Strain Relief
26	013731	Cable Tie (3 required) – (2required <i>older units</i>)
27	503382-E	MX Housings, Ferrite Core & Cord <i>(CE model)</i>
	028241-09-x	Black Bottom Housing

Catalog

MX1050XTEE
 MX1050XTEES
 MX1050XTPEE
 MX1050XTPSEE
 MX1050XTSEE
 MX1050XTSEES

Model

MX1050XT11EE - MX1050XT11CE
 MX1050XT31CE
 MX1050XT12CE
 MX1050XT22CE
 MX1050XT12SEE - MX1050XT12SCE
 MX1050XT32CE

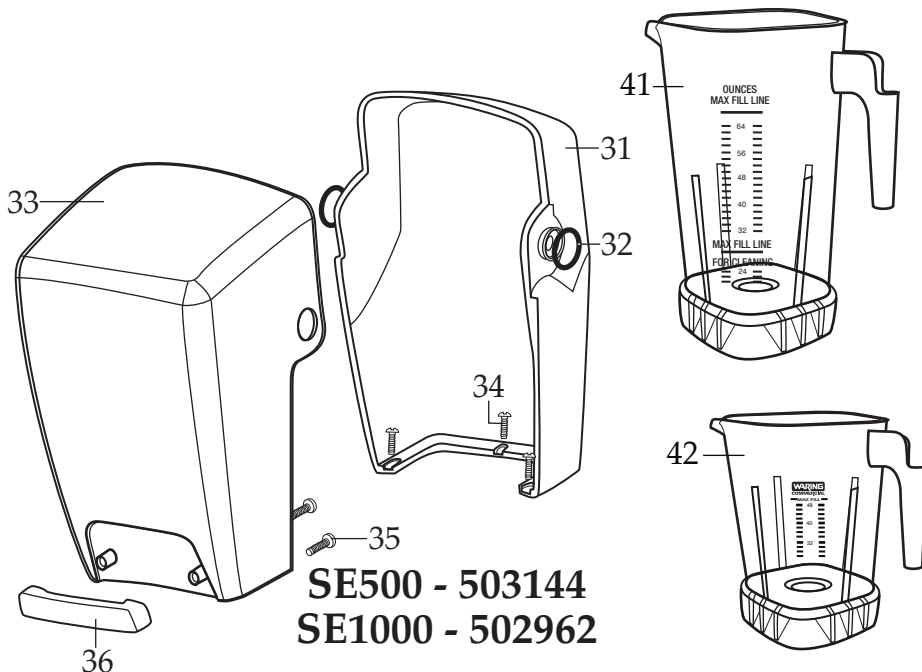
Waring Factory Service Center
 314 Ella T. Grasso Ave.
 Torrington, CT 06790
 Tele. 1-800-269-6640
 Fax 860-496-9017
 www.waringcommercialproducts.com

Illustration #	Part #	Description
28	012505	Screw (4 required)
29	026430	Corner Post (4 required)
30	028928	Screw (4 required)
	026459	Washer (4 required <i>older units</i>)
	012505	Screw (4 required <i>older units</i>)
31	026432-E	Inner Sound Enclosure (64 oz. Eastman)
	028250-E	Inner Sound Enclosure (48 oz. Eastman)
32	027447	"O" Ring (2 required)
33	026433-E	Outer Sound Enclosure (64 oz. Eastman)
	502932	64 oz. Enclosure with Magnet Assembly (<i>older units</i>)
	028251-E	Outer Sound Enclosure (48 oz. Eastman)
34	026461	Screw (3 required)
35	012505	Screw (2 required)
36	026434	Sound Enclosure Handle
37	503397	Blade Assembly (Raptor containers)
	503345	Blade Assembly
38	024271	O Ring
39	024268	Nut Gasket
40	029631	Bearing Holder Nut
41	503326	64 oz. Stackable Raptor Container ONLY
42	030888	48 oz. Stackable Raptor Container ONLY
	503308	48 oz. Eastman Container ONLY

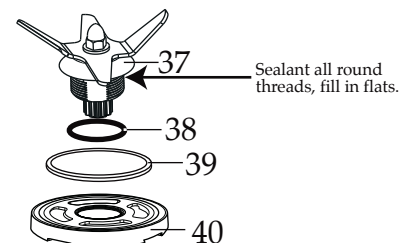
Notes for 503398, 503348 & 503439 :

Torque 100-125 in/lbs

Sealant all around the threads, fill in flats.
 Dow Corning Sealant RTV 733



SE500 - 503144
SE1000 - 502962



030889
 Blending Assembly Kit
 (Raptor containers)

031060
 Blending Assembly Kit

Catalog

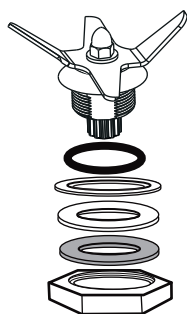
MX1050XT
MX1050XT
MX1050XT
MX1050XT
MX1050XT
MX1050XT
MX1050XT

Model

MX1050XT11EE - MX1050XT11CE
MX1050XT31CE
MX1050XT12CE
MX1050XT22CE
MX1050XT12SEE - MX1050XT12SCE
MX1050XT32CE

Waring Factory Service Center
314 Ella T. Grasso Ave.
Torrington, CT 06790
Tele. 1-800-269-6640
Fax 860-496-9017
www.waringcommercialproducts.com

Illustration #	Part #	Description
43	026798	Support Washer
44	026648	64 oz. Stainless Steel Container
45	026649	Container Support
46	026797	Bearing Holder Gasket
47	026796	Bearing Holder Washer
48	026795	Stainless Steel Jar Bearing Holder Nut



032483

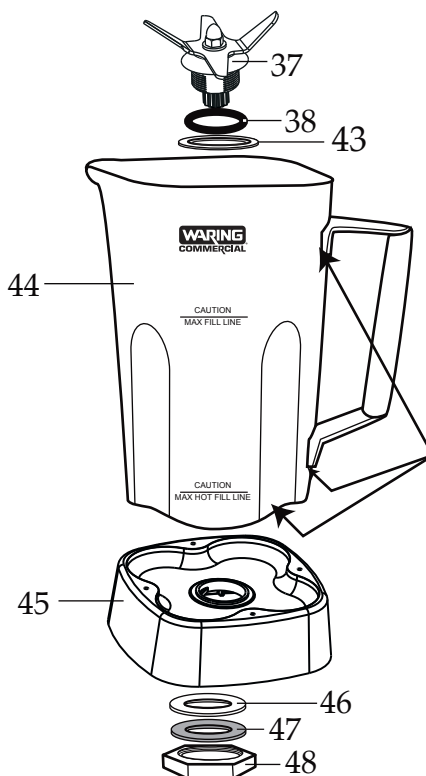
Blending Assembly Kit

Notes for 503346 :

Torque 100-125 in/lbs

Sealant applied all around indicated areas.
Dow Corning Sealant RTV 733

Lubricant applied to O Ring
Dow Corning 200 (R) Fluid

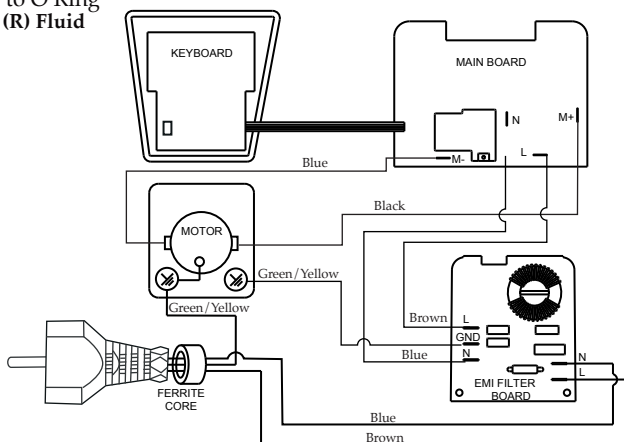


503346 - Stainless Steel Container

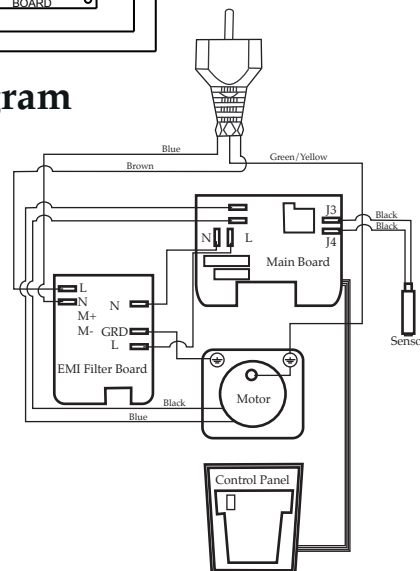
Item For Older Units



502959 Lead (bypass sensor)



Wiring Diagram



Wiring Diagram (older units)